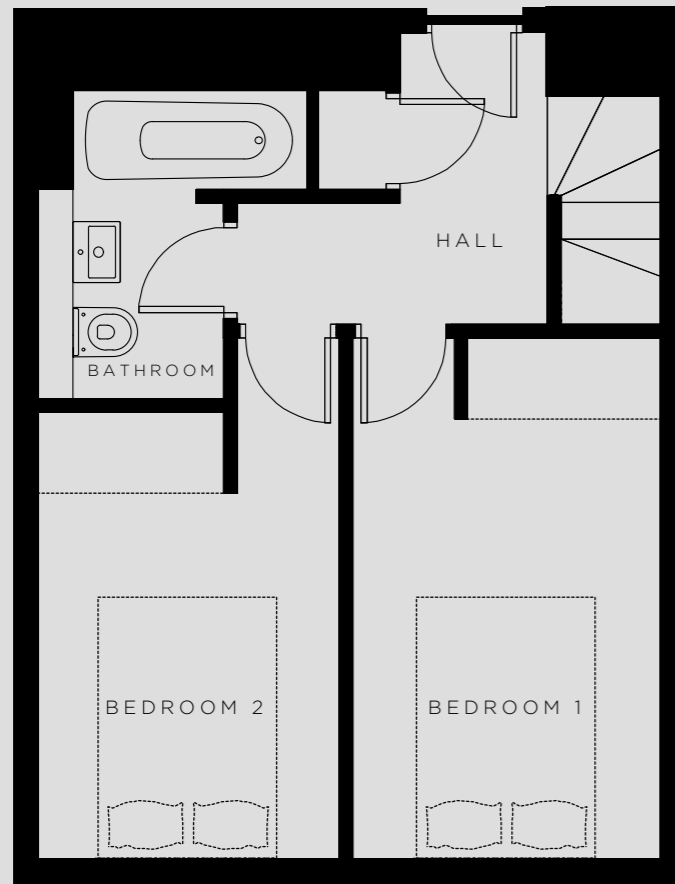
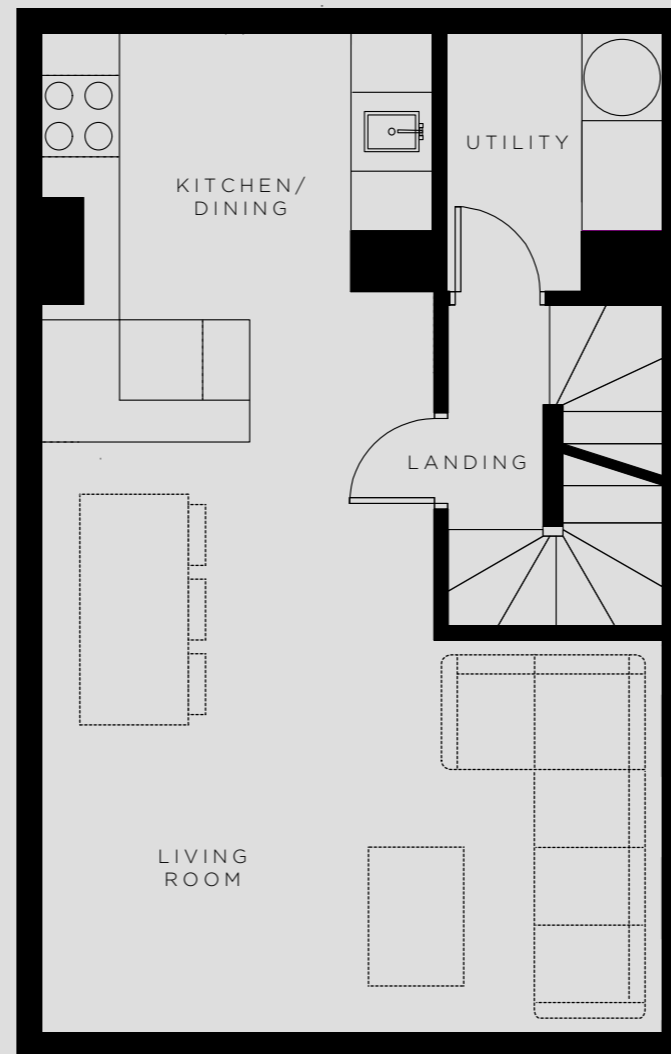


SKY GARDENS - APARTMENT 3Ae TYPICAL LAYOUT



GROUND FLOOR



FIRST FLOOR



SECOND FLOOR

Harnessing the convenience of inner city living with the attractions of appealing outdoor living space, Sky Gardens provides a blueprint for modern, contemporary living.

Kitchen/Dining - 2.898m x 2.783m

Living Room - 4.603m x 5.468m

Bathroom - 2.573m x 2.255m

Bedroom 2 - 2.159m x 3.288m

Bedroom 1 - 2.209m x 3.833m

Master Bedroom - 3.762m x 4.094m

All measurements taken from the widest point in a room.

There are some instances where ceiling heights may vary. Please enquire for more information on this.

SKY GARDENS
PHASE 2

SKY GARDENS- APARTMENT 3Ae TYPICAL LAYOUT



Beech paneled walls and Italian concrete effect flooring, combined with a natural colour palette, creating a distinctive design in this scandinavian themed home.

SKY GARDENS
PHASE 2