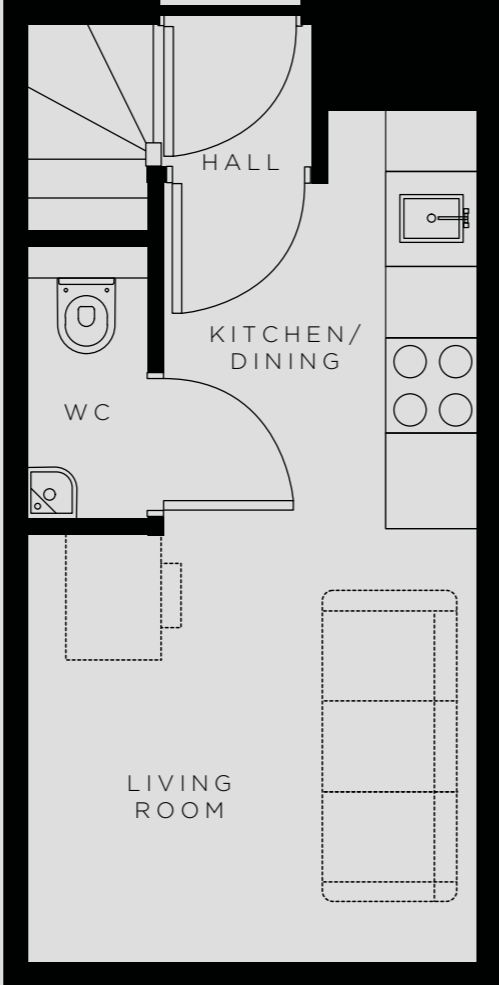
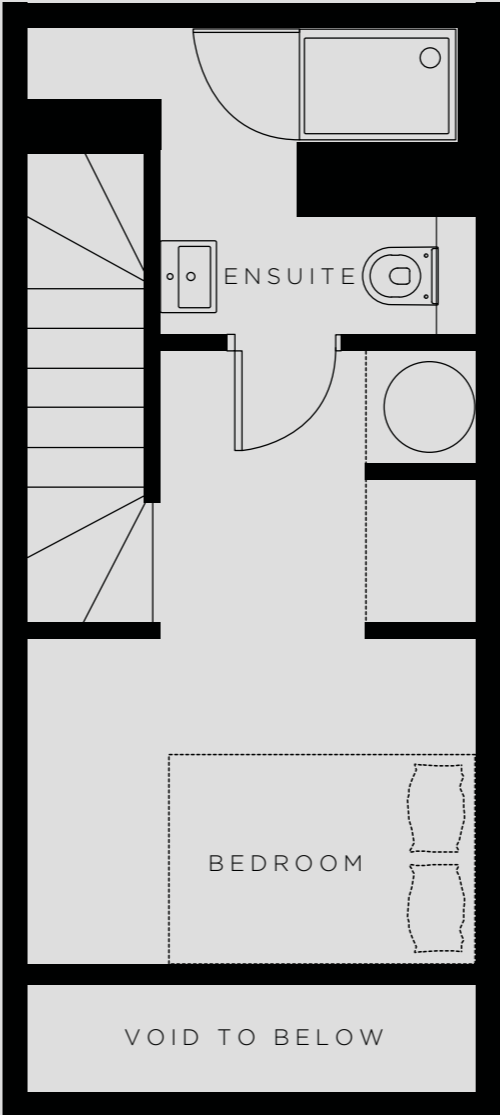


SKY GARDENS- APARTMENT 1E TYPICAL LAYOUT



GROUND FLOOR



FIRST FLOOR

Harnessing the convenience of inner city living with the attractions of appealing outdoor living space, Sky Gardens provides a blueprint for modern, contemporary living.

Kitchen/Dining - 1.988m x 2.647m **Ensuite** - 2.843m x 1.922m
Living Room - 2.843m x 4.687m **WC** - 0.750m x 1.701m
Bedroom - 2.843m x 3.892m

All measurements taken from the widest point in a room.

There are some instances where ceiling heights may vary. Please enquire for more information on this.

SKY GARDENS
PHASE 2

SKY GARDENS- APARTMENT 1E TYPICAL LAYOUT



Beech paneled walls and Italian concrete effect flooring, combined with a natural colour palette, creating a distinctive design in this scandinavian themed home.

SKY GARDENS
PHASE 2